

Instead of turning right, **turn left**, following the signs for Highway 93A

4. Meeting of the Waters

45 minutes from Sunwapta

About 15 minutes on the Old Highway is where you will find where the Whirlpool and the Athabasca Rivers meet, and is a great stop to realize the power between these two rivers as they come together. There is a great display here for more history of the fur traders that would meet here.

Expected Visiting Time: 5-10 minutes
Turn right and continue North past the Wabasso Campground for the turn-off for ...

5. Mount Edith Cavell

1.75 hours from Sunwapta

Mount Edith Cavell Road (10 minutes from Meeting of the Waters) winds uphill for 14.5km (9 miles) to the base of Mt. Edith Cavell, named after a heroic nurse from the First World War. Expect about a 40 minute drive with plenty of switchbacks (no RVs) to the main parking lot. There are two main trails from here for beautiful views of the mountain and Angel Glacier:

- 1) a main trail taking you to the Cavell Pond that's nestled just below the glacier above (10 minutes one-way);
- 2) Head left when the trail begins to the Cavell Loop - which is a half a days hike up towards the stunning Cavell Meadows. You don't need to hike the whole thing though! By taking the Cavell Loop trail, you'll find less tourists and amazing views if you want a walk that is longer than 20 minutes.

Expected Visiting Time: 30 -45 minutes (depending)



Now, drive back down to meet with Highway 93, and follow signs towards Jasper for 28 km (7.4 mi) to ...

6. Jasper SkyTram

2.75 hours from Sunwapta

Turn left after Whistler's Campground (45 minutes from Mt. Edith parking lot), which leads to the main parking lot for the Jasper Tramway entrance.

At the top of the mountain, we recommend the 1km walk that allows sights for miles in all directions, even to the summit of mighty Mt. Robson. Even a short 15 minute walk up the ridge will afford mind-blowing views than the chalet can offer. Remember, you are also at a high altitude, and it will take longer to catch your breath if

you over-exert yourself. Informative displays and plaques make the Jasper Tramway a must-see to any Jasper trip.

Expected Visiting Time: 1.5 hours

Total tour time (including return):

6 hours

... and life-long memories!

Crave more adventure?

Pick up our Signature Self-Drive Tours 2 & 3, driving map, and our hikers guide!

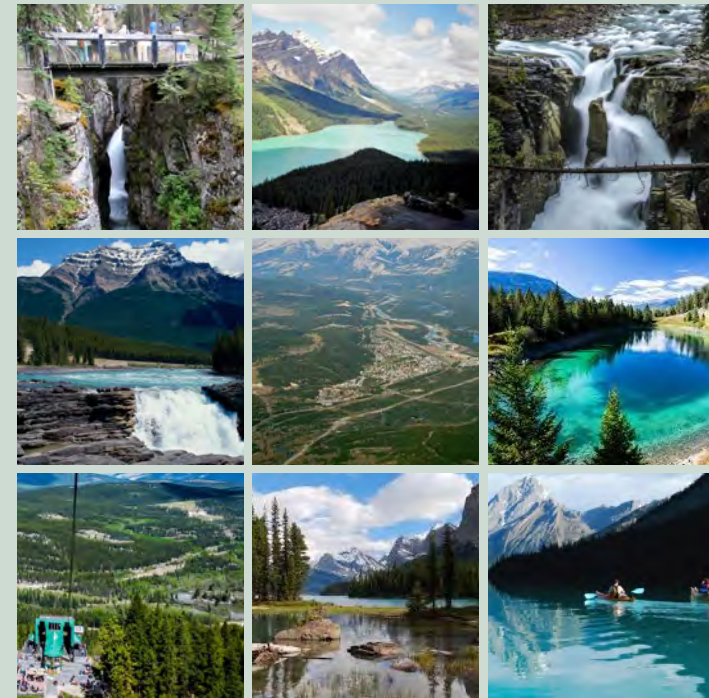
Signature Self-Drive Tours



1) THE OLD HIGHWAY



@sunwaptafalls



1-888-828-5777 | info@sunwapta.com
www.sunwapta.com

53 km South of Jasper

Up for new adventures off of the main highway? The Old Highway (93A) is the original highway before the Parkway was built. This back road gem offers beautiful lakes, hikes and forest growths with less traffic. ** before you leave, check with the front desk to make sure everything is open!*

To Begin..

Depart from Sunwapta Falls, and turn left (North towards Jasper) for 4km (2.5 miles)

1. Athabasca Viewpoint

3-5 minutes from Sunwapta

This is one of the best overlooks to start off your tour in the park, offering a broad, expansive view of the Athabasca Valley! If you look to the south beyond the 3170m (10,400 ft.) Summit of Mt. Quincey, you can almost see the headwaters of the Athabasca River. A perfect spot to take a stunning panorama shot of the area (make sure to tag us in it!).

Expected Visiting Time: 5 minutes

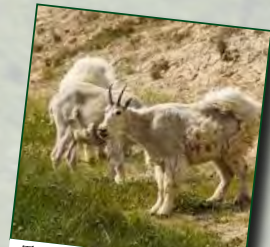
Turn left and drive for 13km (8 miles) to...

2. Goathill Viewpoint

10 minutes from Sunwapta

5 minutes past Athabasca Viewpoint, the

highway will descend alongside the Athabasca River on your left, and light tan, dusty hills will start to form on your right. Keep an eye out, as this is Goathill Viewpoint! There's a large parking lot as you drive to



The Mountain Goats love to pose!

the top of the hill (please do not park on the highway, and cross with caution), where you can safely park and walk to where Mountain Goats are often enjoying the mineral licks here throughout the summer. There is also a great viewpoint at the parking lot to enjoy the summits of Mt. Christie & Mt. Edith Cavell, and the Athabasca River. **(Pro Tip: on the river-side of this stop by the parking lot, there are often even more goats and a chance to walk along the river!)**

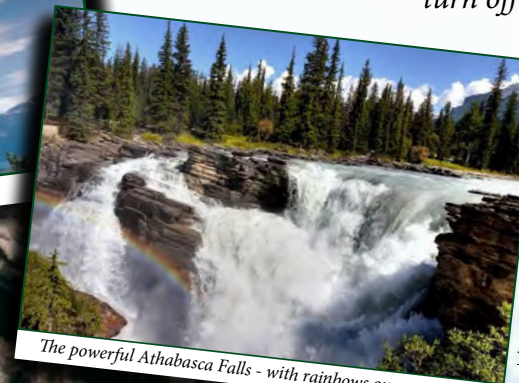
Expected Visiting Time: 15 minutes



Athabasca Viewpoint, just off the highway



Stunning panoramas at Goathill Viewpoint (and where you can find more goats!)



The powerful Athabasca Falls - with rainbows on sunny days!

3. Athabasca Falls

20 minutes from Sunwapta

If you're short on time - make the Athabasca Falls a priority to stop at! There's a large parking lot available, and well maintained trails for everyone to experience this natural wonder. At the main falls, enjoy multiple accessible viewpoints close enough to feel the

thunder of the water below and the mist from the falls on your face. As you look below, you can also see the beginnings of the incredible canyon this waterfall has carved out over the course of thousands of years.

(Pro tip: for the full experience, follow the signs for the lower falls canyon walk, which brings you into the heart of the canyon these waters have carved out. It's a short walk, but there are a lot of steps to descend into the canyon - so be prepared!)



Walking through the lower canyon

Expected Visiting Time: 20 minutes

Follow us on Instagram and Pinterest

@SunwaptaFalls

& tag us in your favourite photos!

Now, let's continue on to the Old Highway (93A)! →