

At the Columbia Icefields, take some time to explore with the:

## Ice Explorer Tours

Book online or at the Discovery Centre  
The Athabasca Glacier flows 6 km (3.75 miles) from the Icefield, and it is over 1 km (.5 miles) wide. Take a guided, 90 minute tour to the glacier's heart in the massive custom built Ice Explorers, you will enjoy a 5 km round trip with a stop in the middle and a chance to walk on the surface of the Athabasca Glacier.

Expected Visiting Time:  
about 2+ hours

Exploring the Columbia Icefield in style!

Conquering the world on the Skywalk

## The Glacier Skywalk

20 minutes North from Centre (must be by tour)  
The latest addition to the Icefields Parkway - and a must-do adventure if time allows it! To take park in the Skywalk, you must book a tour at the Columbia Icefields Discovery Centre and board a tour bus that drives you 20 minutes north to the Skywalk. Enjoy interpretive experiences, tours, a walk over the glacier, stunning 360 views and more! Experience waterfalls, wildlife, fossils and more on the exciting cliff-edge walkway that leads to a platform where only glass separates you from a 918 foot drop. Keep in mind that with the bus there, guided tours at the Skywalk, and a return trip.

Expected Visiting Time: At least 3.5 hour

Up for even more amazing sights? Here are a few extra stops 5-10 minutes after the Icefields:

## 6. Nigel Creek Viewpoint

Named for Nigel Vavasour, a Packer from an 1898 expedition, the mountain is folded into stone waves called syncline and the low pass is visible from the viewpoint.

## 7. Sunwapta Pass

The pass is the marks the divide for Icefields rivers, and is also the southern-most point in our tour until you're in Banff National Park.



## 8. Hilda Creek Viewpoint

Hilda Peak, the jagged mountain to the West, can be seen here, which was carved out by mighty ancient glaciers.

## 9. Panther Falls

A 1 km (.5mile) trail leads from the parking lot to these very stunning, and somewhat hidden falls. Also visible across the valley are Bridal Veil Falls that are often swept up in the cold glacial winds.

Total tour time (including return):

**6 hours**

(add about 3.5 hours for the Skywalk)

Crave more adventure?

Pick up our Signature Self-Drive Tours  
1, 2, and our hikers guide!

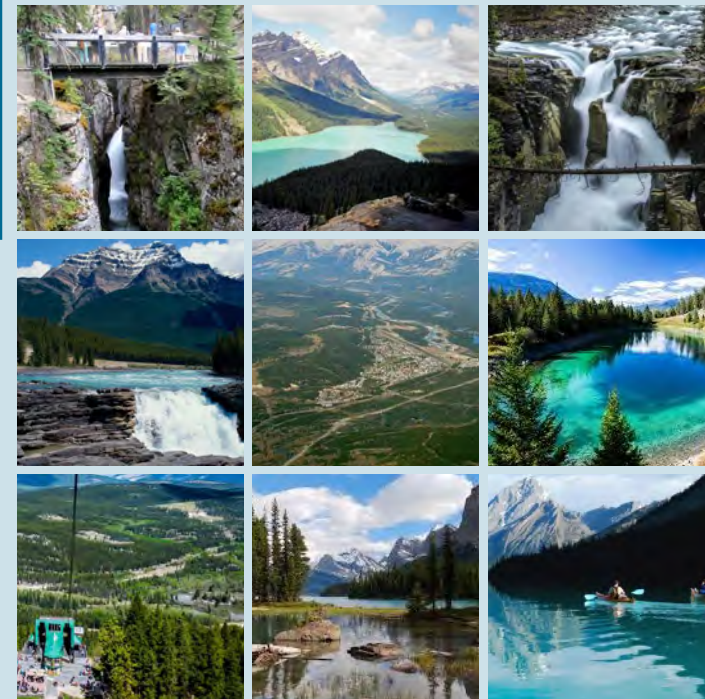
Signature Self-Drive Tours



## 3) THE ICE



@sunwaptafalls



1-888-828-5777 | info@sunwapta.com  
www.sunwapta.com

**53 km South of Jasper**

This tour offers the best of stops between us and the Icefields

To Begin..

For our first stop, turn right (South) for 6km (4 miles) on Highway 93,

### 1. Bubbling Springs

5 minutes from Sunwapta

This small picnic area is named for small cold water spring which bubbles to the surface in various pools. Something unique and close to the Lodge for the family to enjoy!

A short drive up the highway is the...

### 2. Quartz Sandstone Rockslide

15 minutes from Sunwapta

The highway intersects an ancient rock slide at this point and although in this quiet place it is hard to imagine the thunderous sound, that happened when a slab of the stone fell away from the side of the ridge to the East, covering the surrounding area with tons of pinkish rock.

Expected Visiting Time: 5-10 minutes

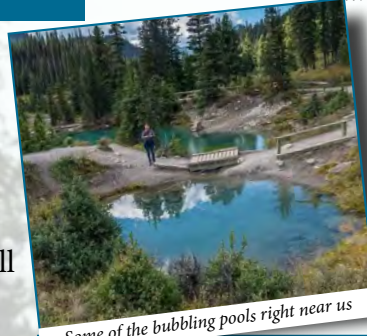
Approximately 9.5km (6 miles) further South we reach the...

### 3. Sunwapta Viewpoint

30 minutes from Sunwapta Falls

From this lofty point you can see the giants that live in the Columbia Icefield region. Across to the West is the 3371m (11,060 ft.) face of the Diadem Peak and straight to the South is the smaller Tangle Ridge. Between these two is the impressive and enormous Mt. Kitchener, which stretches skyward some 3505m (11,400 feet.) The view here is just a taste of the marvels down the road.

Expected Visiting Time: 10 minutes



Some of the bubbling pools right near us



Sunwapta Viewpoint and its beautiful lake

As you drive another 6km (4 miles) passing through another Avalanche Zone, you'll come across the...

### 4. Stutfield Glacier Viewpoint

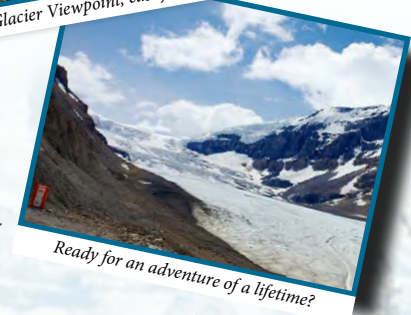
40 minutes from Sunwapta

From here can be seen the gorgeous Stutfield Glacier, a mass that is an arm of the huge Columbia Icefields. It hangs from Mt. Kitchener and Stutfield Peak, tumbling 900m (3,000 vertical feet) towards the valley below.

Expected Visiting Time: 5-10 minutes



Stutfield Glacier Viewpoint, easily seen on bright sunny days



Ready for an adventure of a lifetime?

### 5. The Columbia Icefield

30 minutes from Sunwapta

The famous Columbia Icefield has been reached! On the left you'll find the parking lot entrance of the Columbia Icefield Discovery Centre, and looking right is the Icefields. Even if you go on a sunny day, bring layers to keep warm!

Measuring 325 square kilometers (130 square miles) and over 300 meters (1,000 feet) thick, this frozen expanse is the largest amount of snow south of the Arctic Circle, and is the headwater of the mighty Athabasca River. The snows here have been accumulating and forming ice for over 400 years. The Icefield is the source of eight glaciers, including three visible from the parkway; Dome, Stutfield, and the world Famous Athabasca Glacier, with its unique Ice Explorer tours.

Expected Visiting Time: 2-3 hours

Follow us on Instagram and Pinterest

@SunwaptaFalls

& tag us in your favourite photos!

